

Serviced Offices

Central London Office Space

Covent Garden - Soho - Leicester Square

Serviced Offices In The Heart of Central London













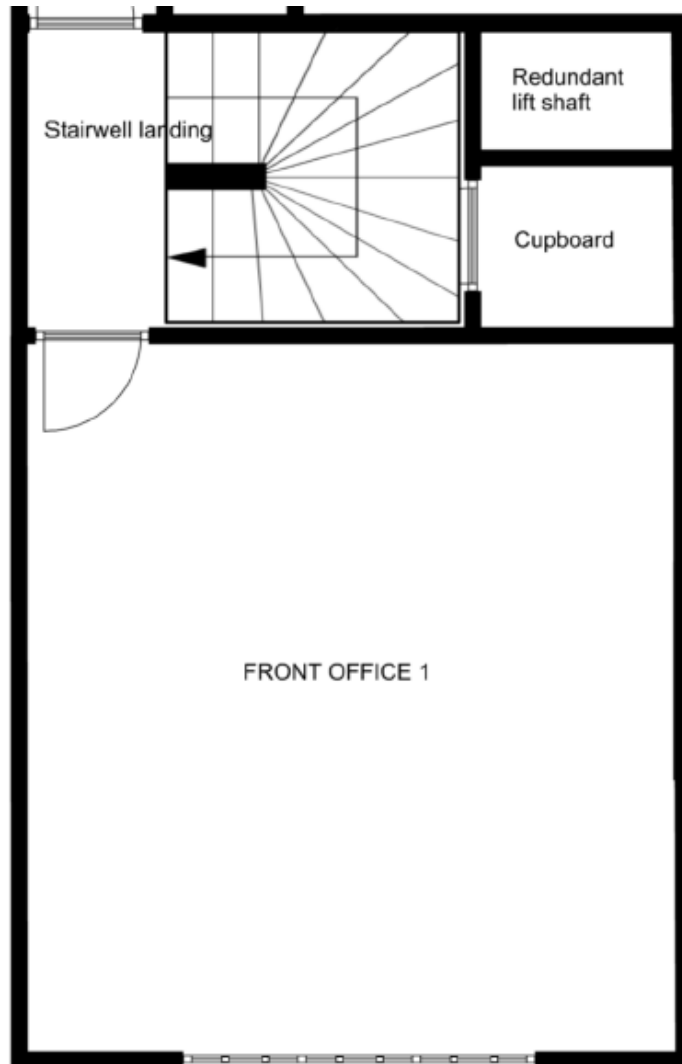
3rd floor 8 Denmark Street WC2H 8LS

General dimensions:

Front office 1 = 6.65m x 4.80m

Stairwell landing = 2.80m x 2.60m

Cupboard = 1.30m x 0.80m



Pricing & Information

£4000.00 + VAT pcm

Included:

- All in monthly occupancy fee + % share of electricity used by you - we show you the Utility bills too
- 24/7 access - secure premises with CCTV and fob door entry system
- Business Rates
- Private Meeting Room
- 1Gb super-fast fibre broadband on Cat5 and Wifi network
- Shower room and shared kitchenette
- Amazing 500 square foot roof terrace
- Furnished or unfurnished - up to you!

Not Included:

- Office Cleaning
- % of Electricity used by your office - we show you the Utility bills so you only pay for what you use
- We do not provide contents insurance for its tenants, you have to arrange this cover